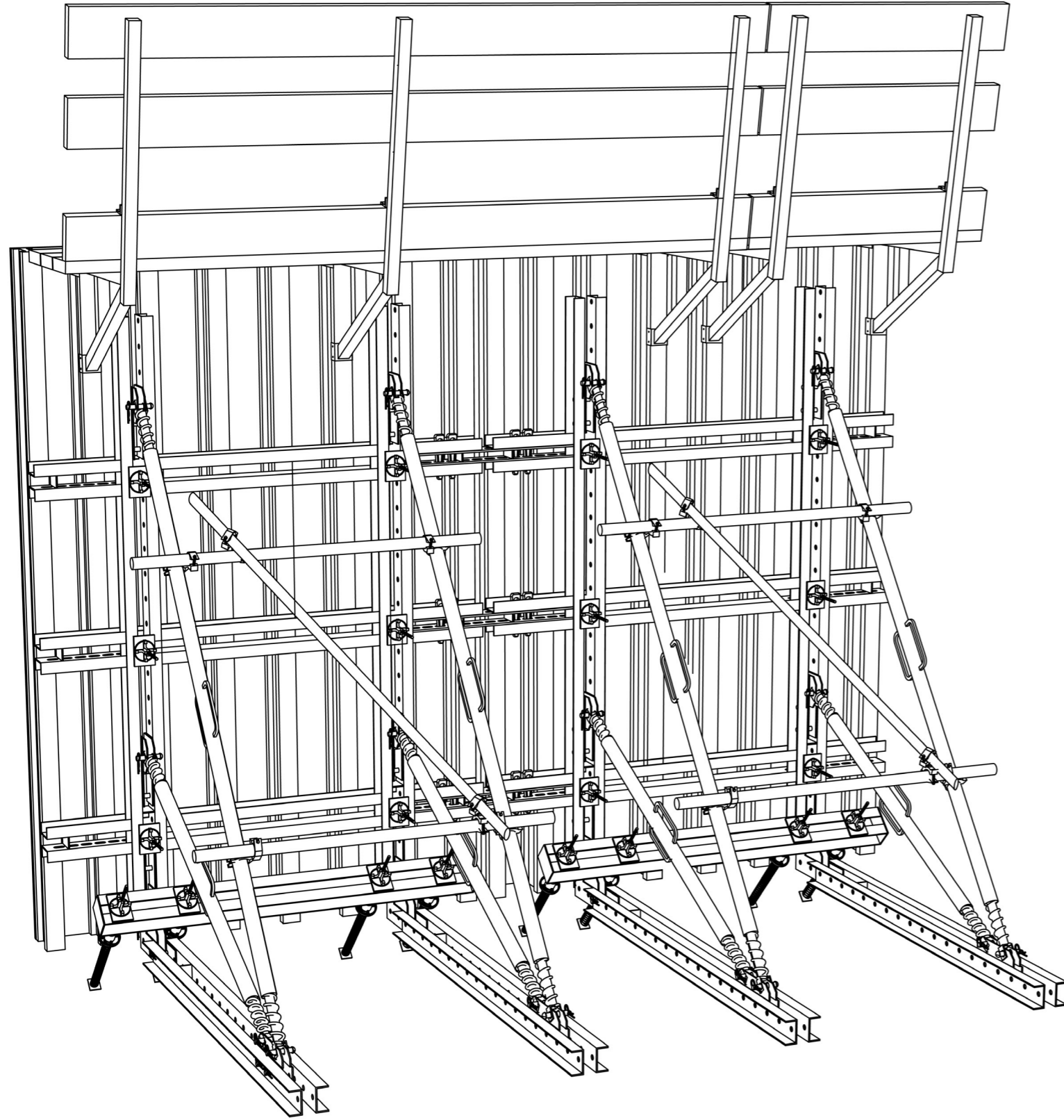
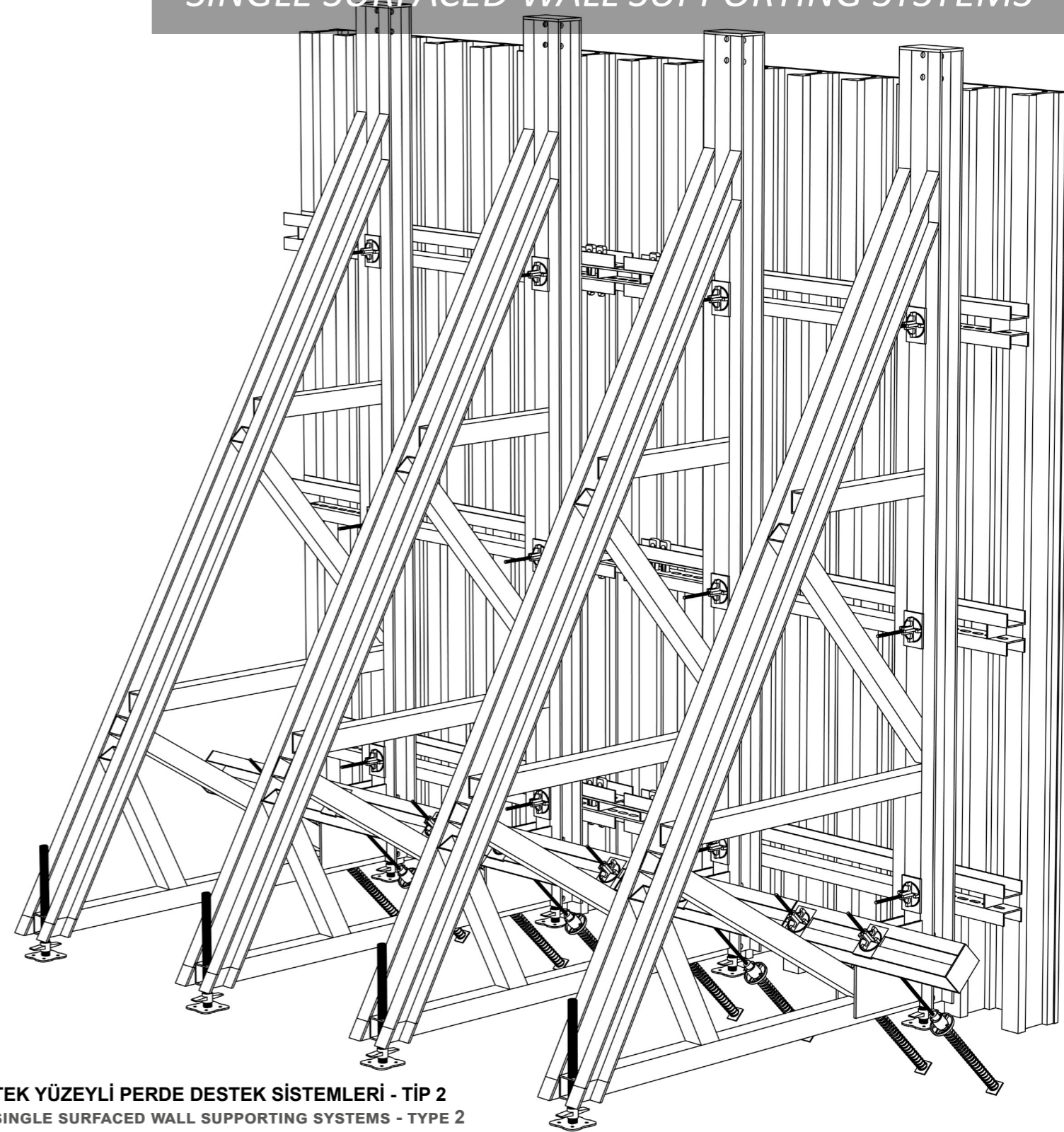


TEK YÜZE PERDE DESTEK SİSTEMLERİ

SINGLE SURFACED WALL SUPPORTING SYSTEMS



TEK YÜZEYLİ PERDE DESTEK SİSTEMLERİ - TİP 1
SINGLE SURFACED WALL SUPPORTING SYSTEMS - TYPE 1



TEK YÜZEYLİ PERDE DESTEK SİSTEMLERİ - TİP 2
SINGLE SURFACED WALL SUPPORTING SYSTEMS - TYPE 2



OĞUZHAN
çelik iskele ve kalıp san a.ş.

SINCE'87

Fabrika

:Çalıcı OSB Mah. Adnan Menderes

Bulvarı No:8 Bucak/Burdur

Telefon

:+90 248 325 35 55 /+90 248 325 13 84

Fax

:+90 248 325 91 91

Web

:www.oguzhaniskele.com

e-mail

:bilgi@oguzhaniskele.com

TS EN 74



TS EN 12810-1

GENEL BİLGİLER / GENERAL INFORMATION

Tek yüzeyine kalıp kurulabilen perdelerde ankraj mili kullanılmadığı için beton basıncı "Tek Yüz Perde Destek Sistemi" tarafından karşılanmaktadır.

Baraj gövde betonunda, dilatasyon perdelerinde, perdelerin alınlarında, kalın döşemelerin alınlarında, yüksek radye temellerin çevresinde, ankraj mili kullanılmasına izin verilmeyen çift yüzeyli perdelerde kullanılır. Sisteme gelen beton basıncı, temelde 45 derece açı ile bırakılan çift kalıcı ankrajlara aktarılır. Perde yüksekliği 4 metrenin altında ise sistem el ile sökülüp takılabilen dikey kuşak, yatay kuşak ve ağırlık payandasından oluşur. Sistem sökülmeden vinç ile taşınabilir. 4 metreden yüksek perdelerde vinç ile taşınabilen üçgen şeklindeki asker payandalar kullanılır.

Kabul edilen beton basıncına göre destek ara mesafesi bulunur. İki veya üç ekipman birbirine bağlantı boruları ve kelepçeler ile bağlanarak bir takım destek ekipmanı oluşturulur.

50 kN/m² beton basıncına dayanıklıdır.

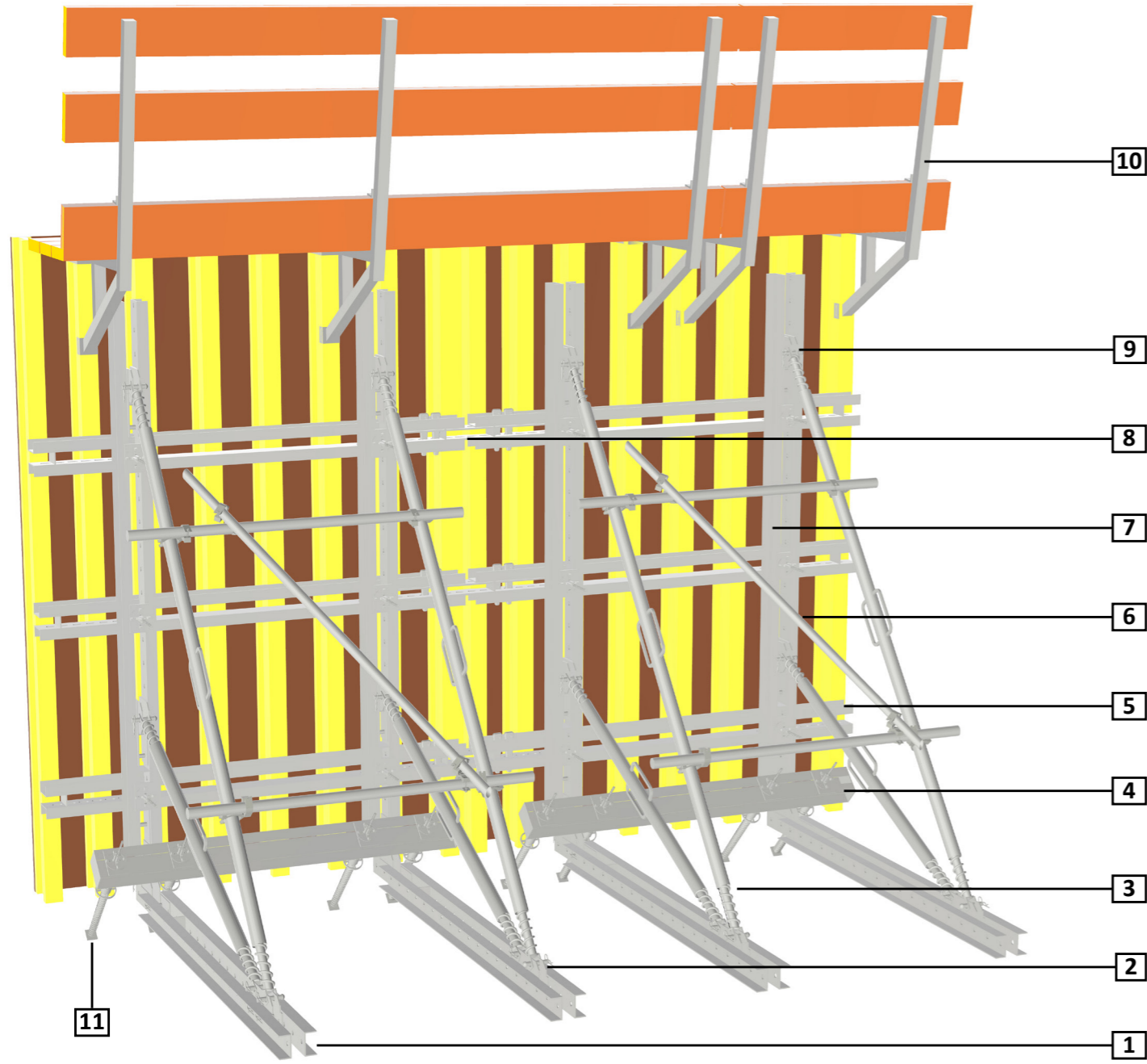
Because anchoring bar can not used in the walls which formwork can be constituted to their single surface, concrete pressure is held by "Single Surfaced Wall Supporting System".

System is used in the concrete of dam embankment, dilatation walls, face of the walls, face of thick slab, around high raft foundations, in double surfaced walls on which is not permitted anchoring bar to be used. Concrete pressure coming to the system is transmitted to double stop anchoring which is left with 45 degree angle in the foundation. If the wall height is lower than 4 m, system consists of vertical waler, horizontal waler and weight prop which can be assembled and dismantled with bare hand. System can be carried without dismantling via a crane. In the walls higher than 4m., soldier props with triangular shape which can be carried via a crane.

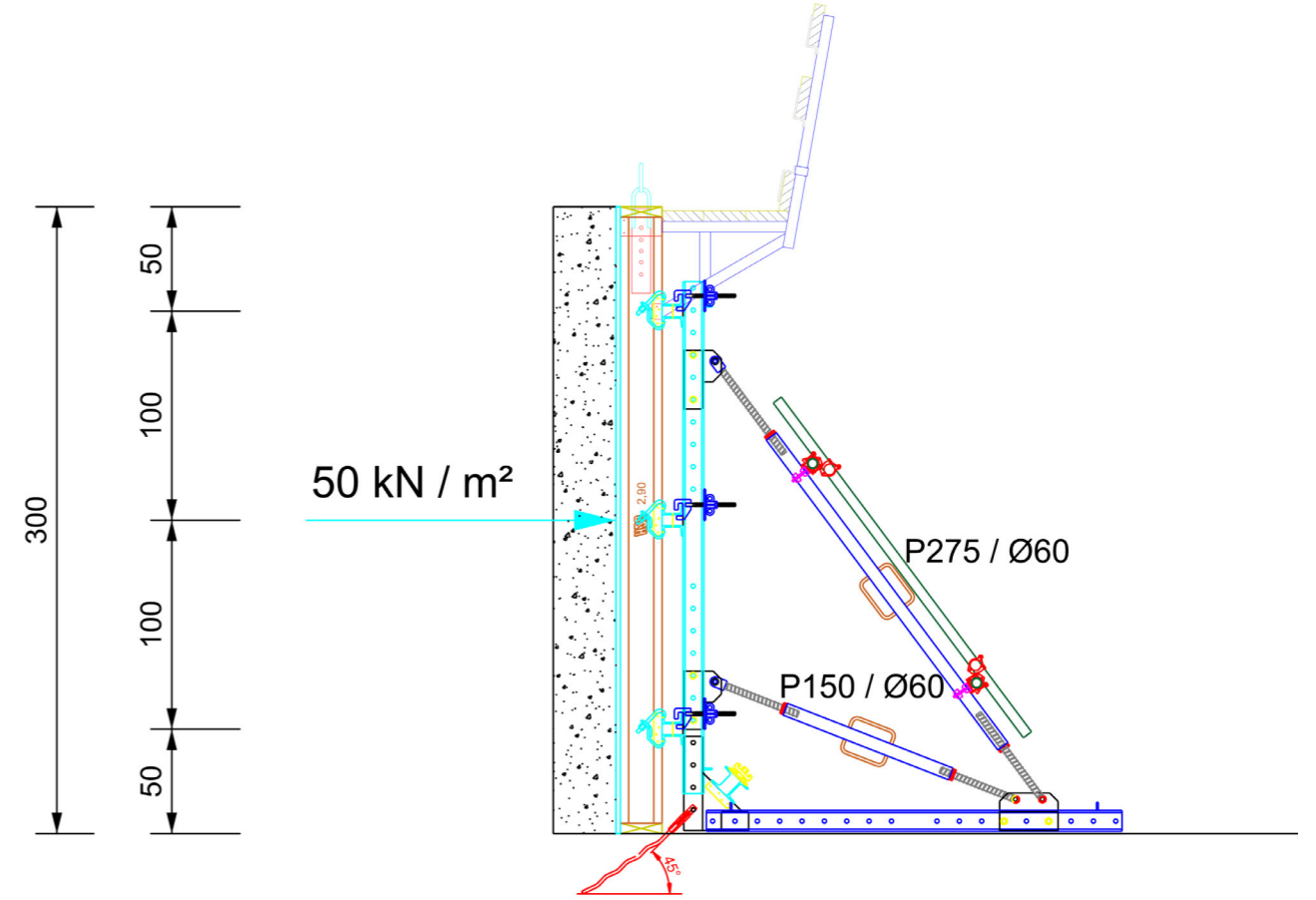
Supporting interval space is available according to accepted concrete pressure. A set of supporting is made up by connecting two or three equipments to each other with connecting pipes and clips.

It is resistant to 50 kN/m² concrete pressure.

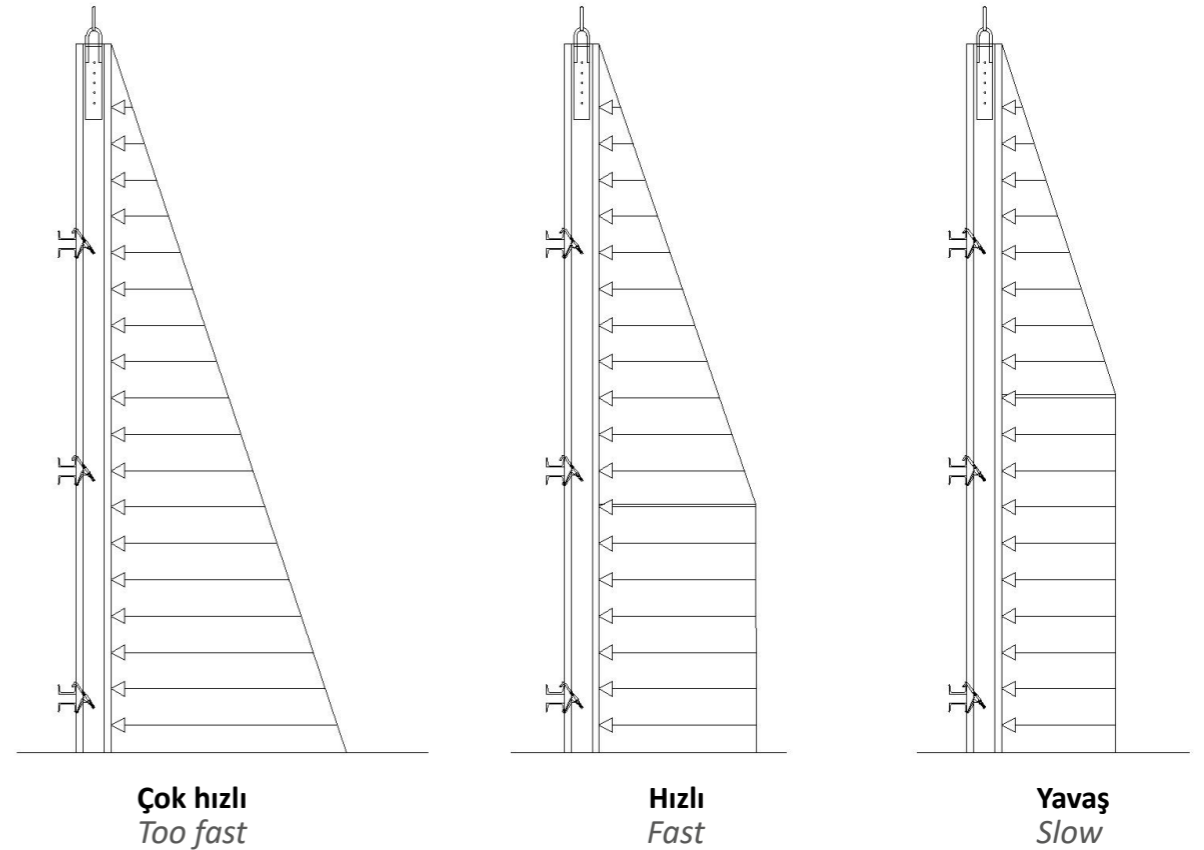




- 1-Yatay Kuşak / Horizontal Waler
- 2-Taban Bağlantı Parçası / Base Connection
- 3-Payandalar / Push Pull Props
- 4-Ankraj Kuşağı / Anchoring Waler
- 5-Çelik Perde Kuşağı / Steel Waler
- 6-Bağlantı Boruları / Connection Pipes
- 7-Dikey Kuşak / Vertical Waler
- 8-Kuşak Birleştirme / Waler Coupler
- 9-Kafa Bağlantı Parçası / Head Connection
- 10 -Çalışma Konsolu / Bracket
- 11 -Zigzag Ankraj / Zigzag Anchoring



Beton döküm hızı azaldıkça beton prizini alacağından dolayı kalıba gelen yük azalacaktır.
As the concrete pouring speed decreases, the load on the mold will decrease as the concrete will set.



Betonun priz alma süresine uygun plaka seçilir.

Daha sonra belirlenen beton basınç dayanımı ile beton sınıf bilgisi temin edildikten sonra betonun kalıp içinde yükselme hızı belirlenir.

A plate suitable for the setting time of the concrete is selected. Then, after the determined concrete compressive strength and concrete class information are obtained, the rate of rise of the concrete in the mold is determined.

1 nolu çizgi beton yüksekliğinin tamamının hidrostatik basınç yüksekliği olduğu durumdur.

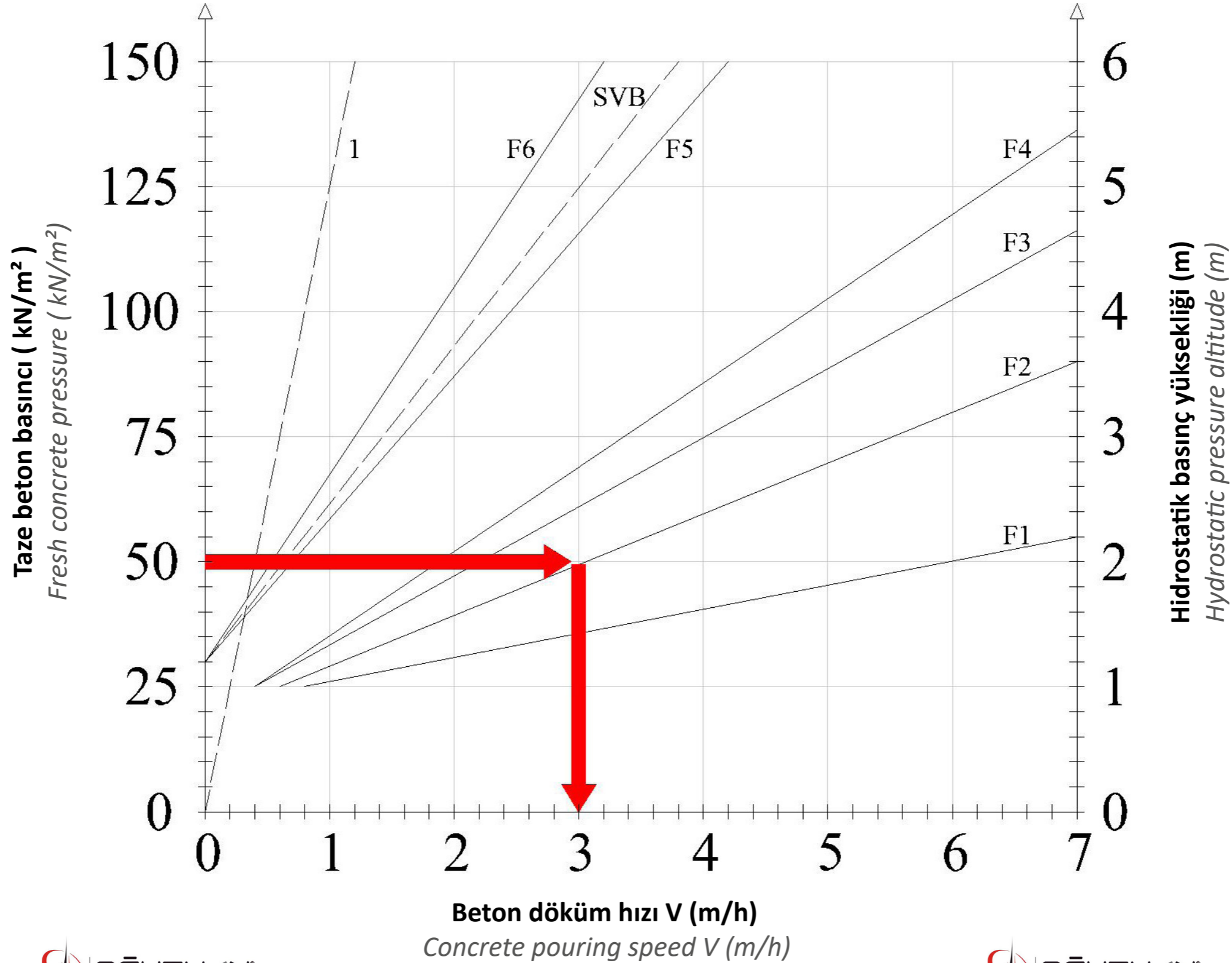
Beton priz alma süresi 5 saat

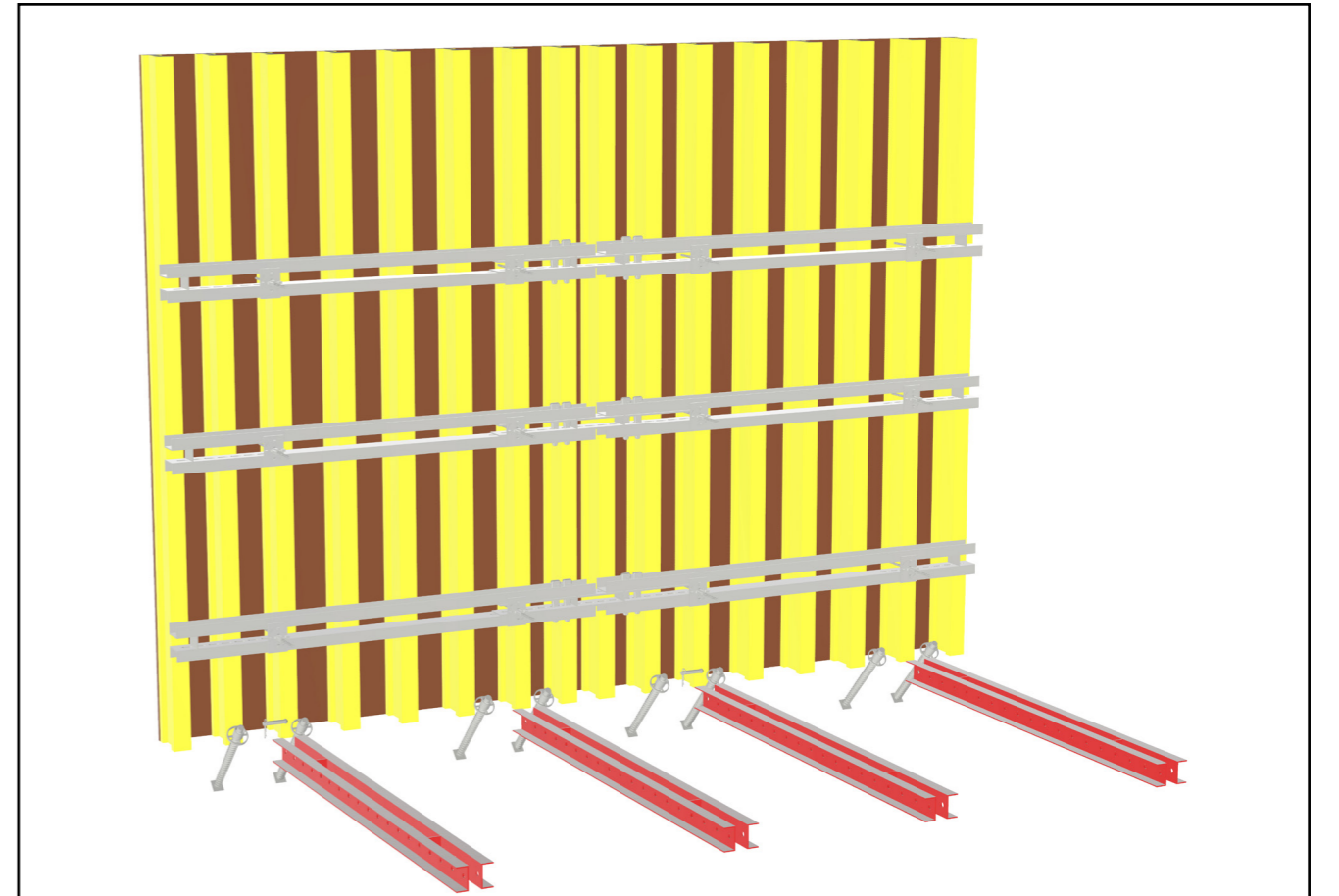
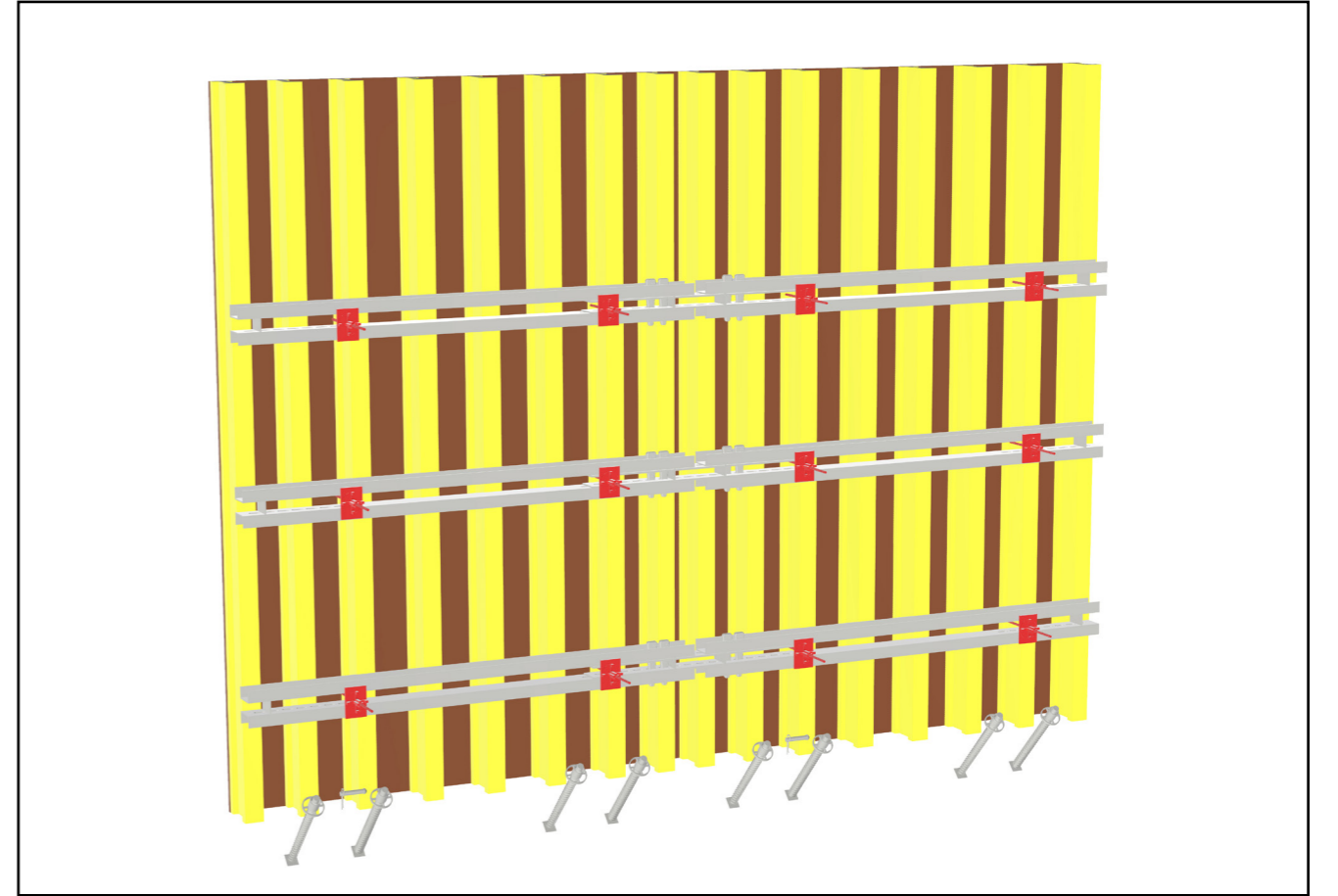
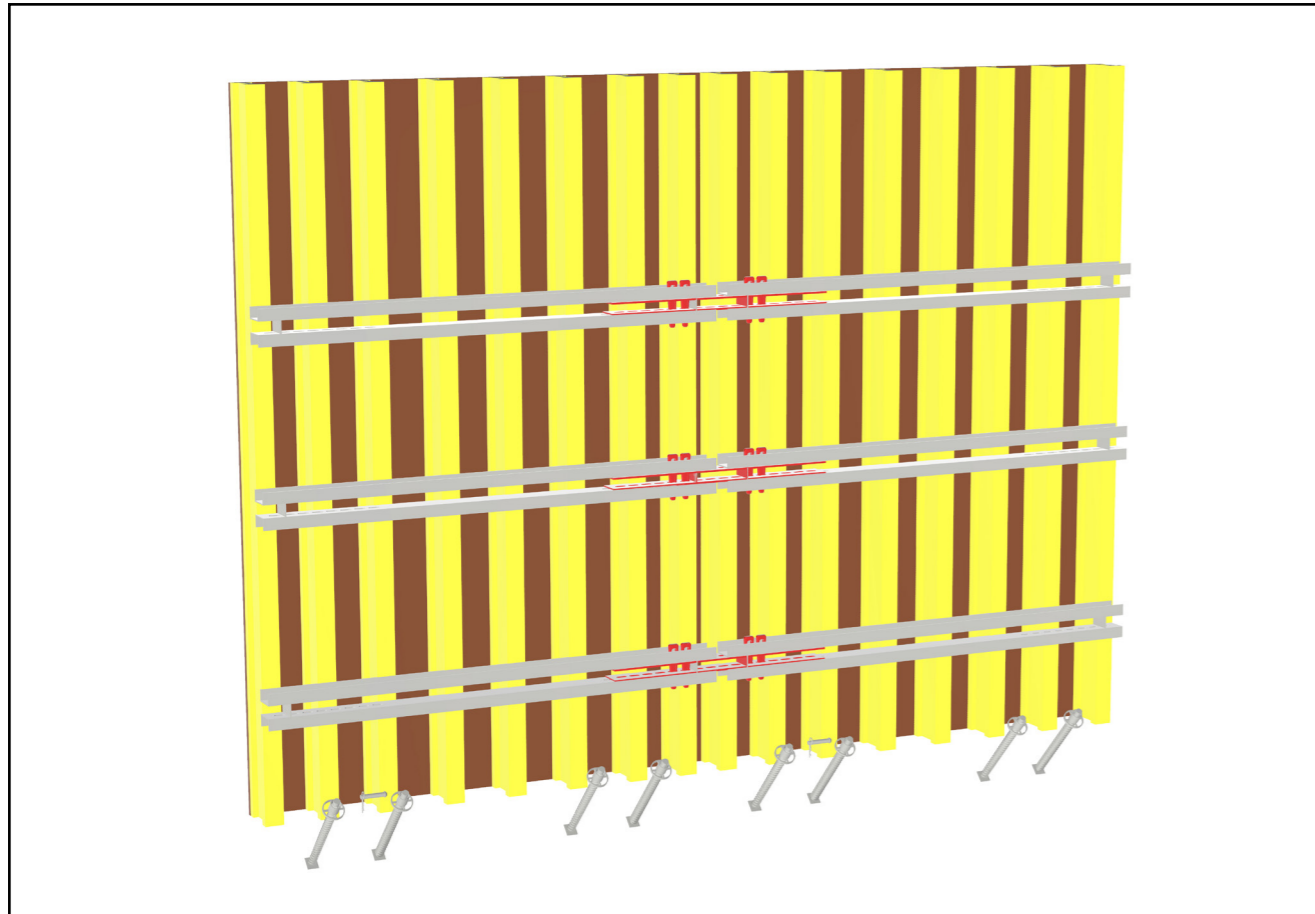
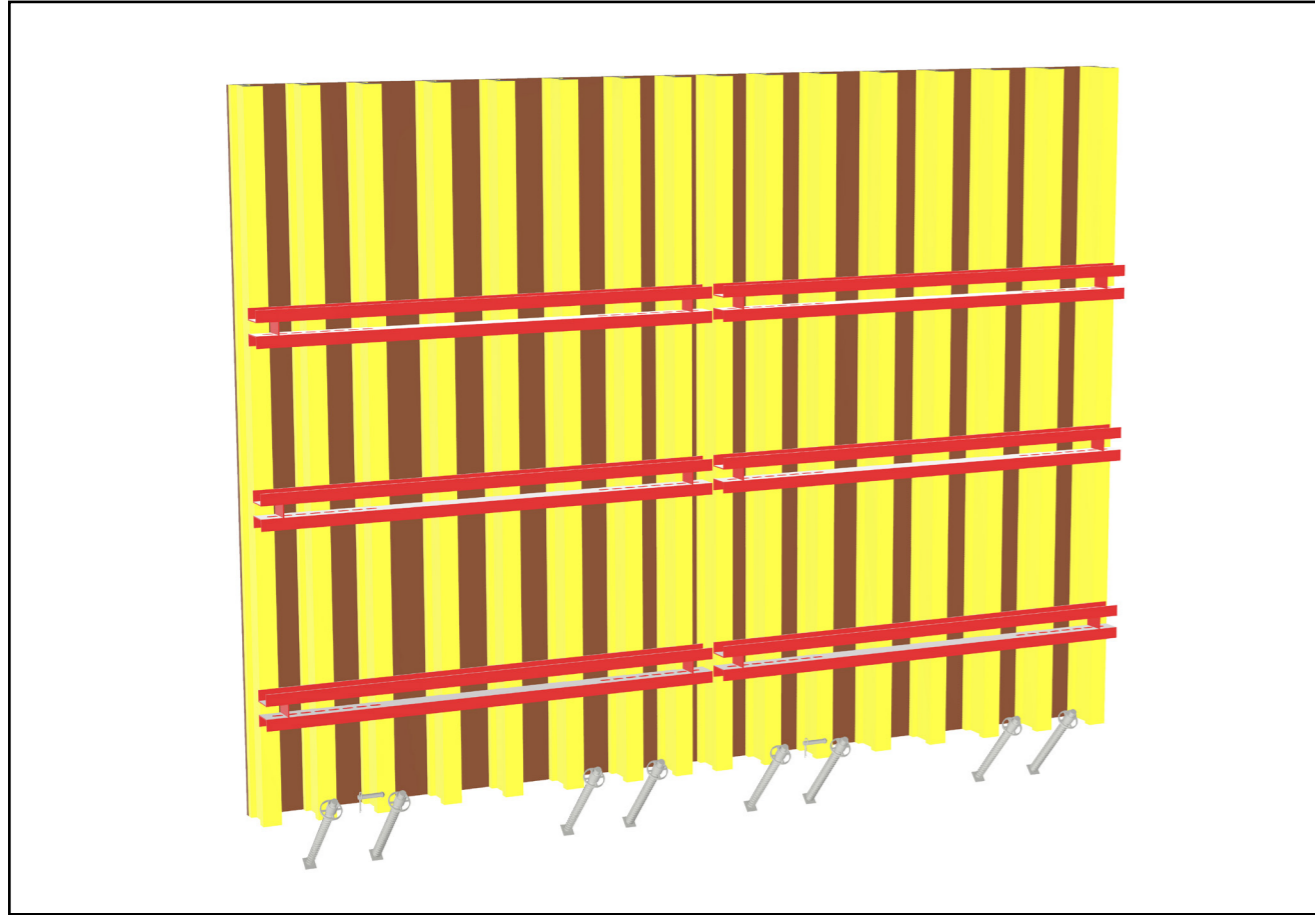
Beton özgül ağırlığı 25 kN/m³

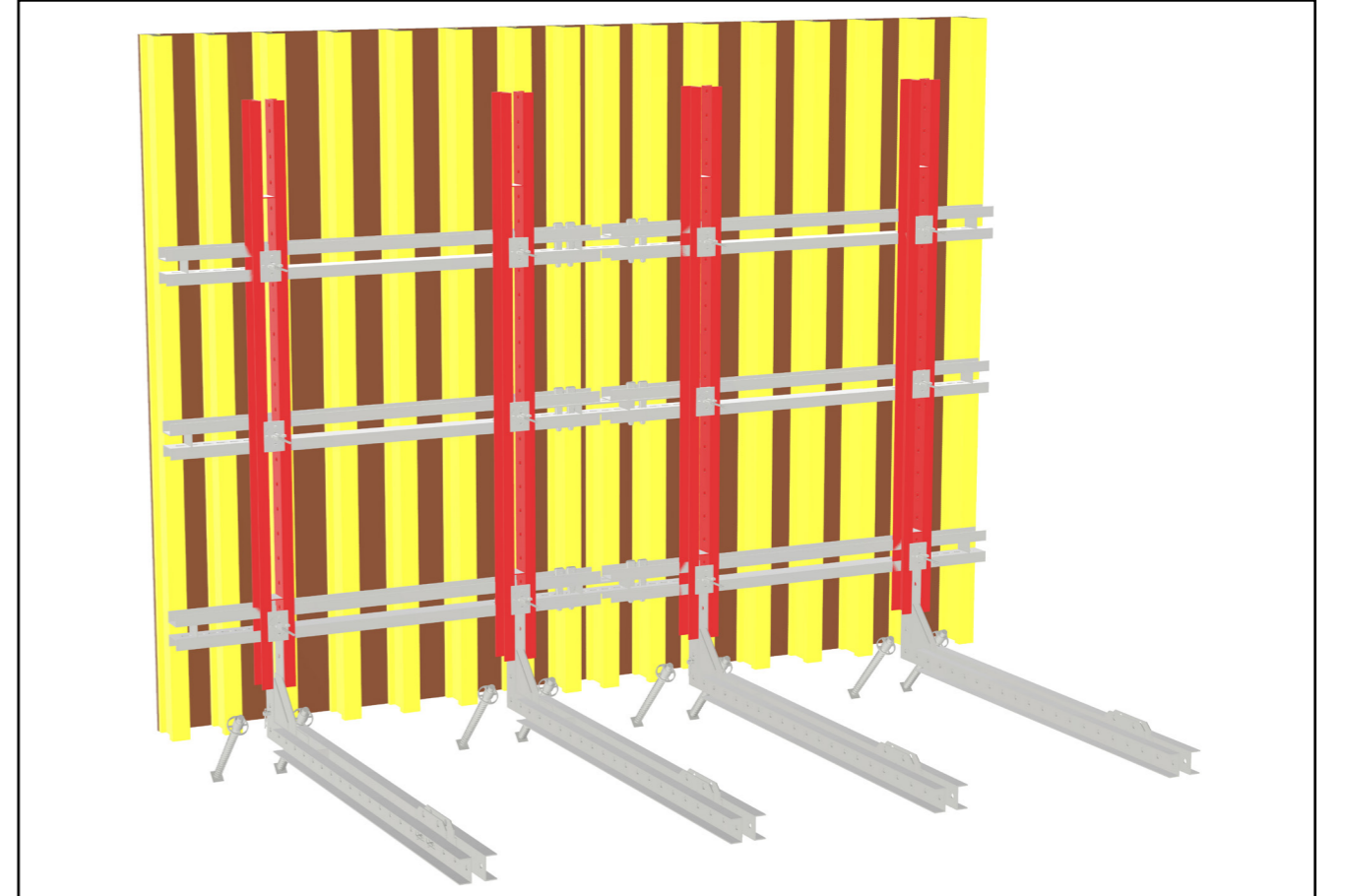
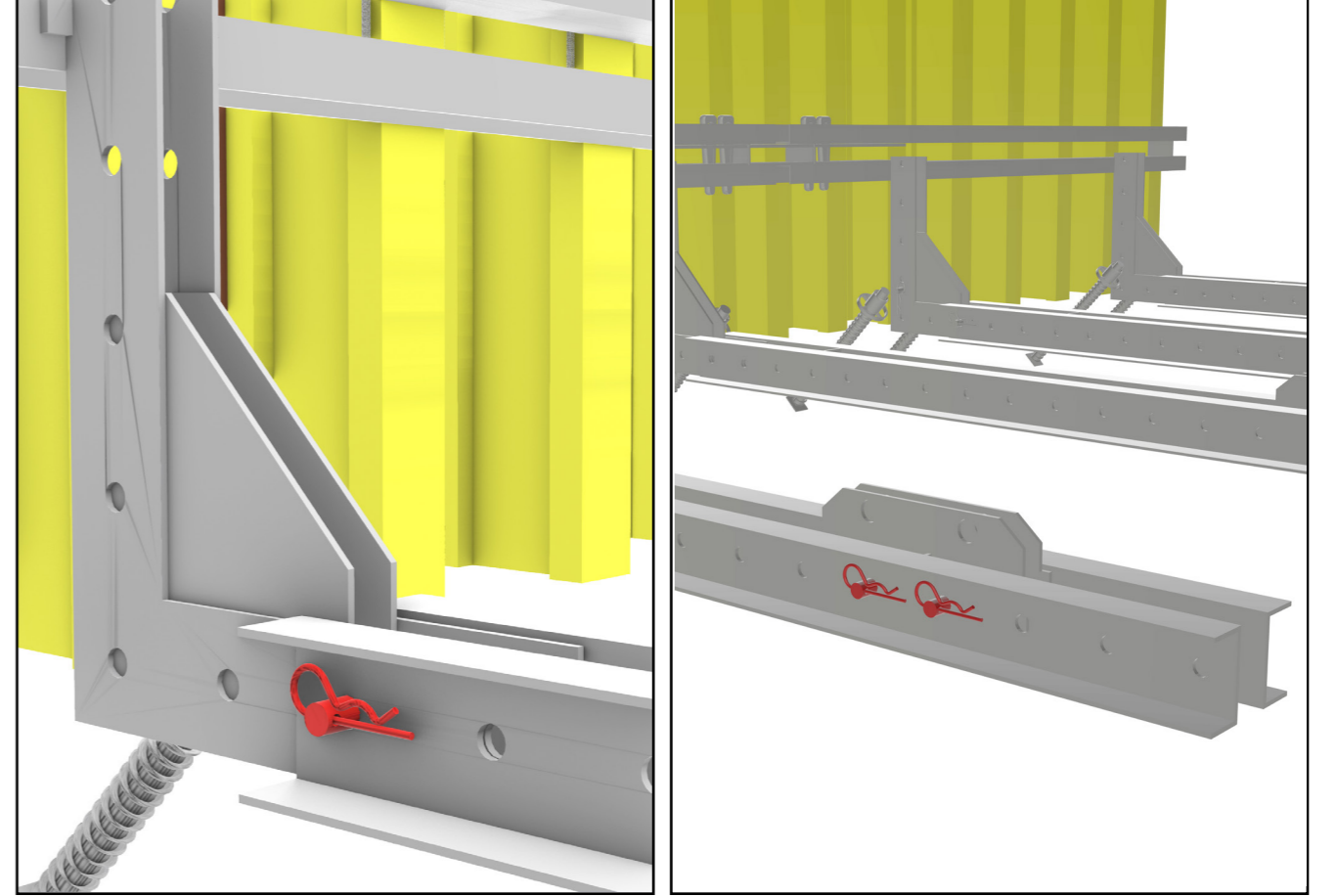
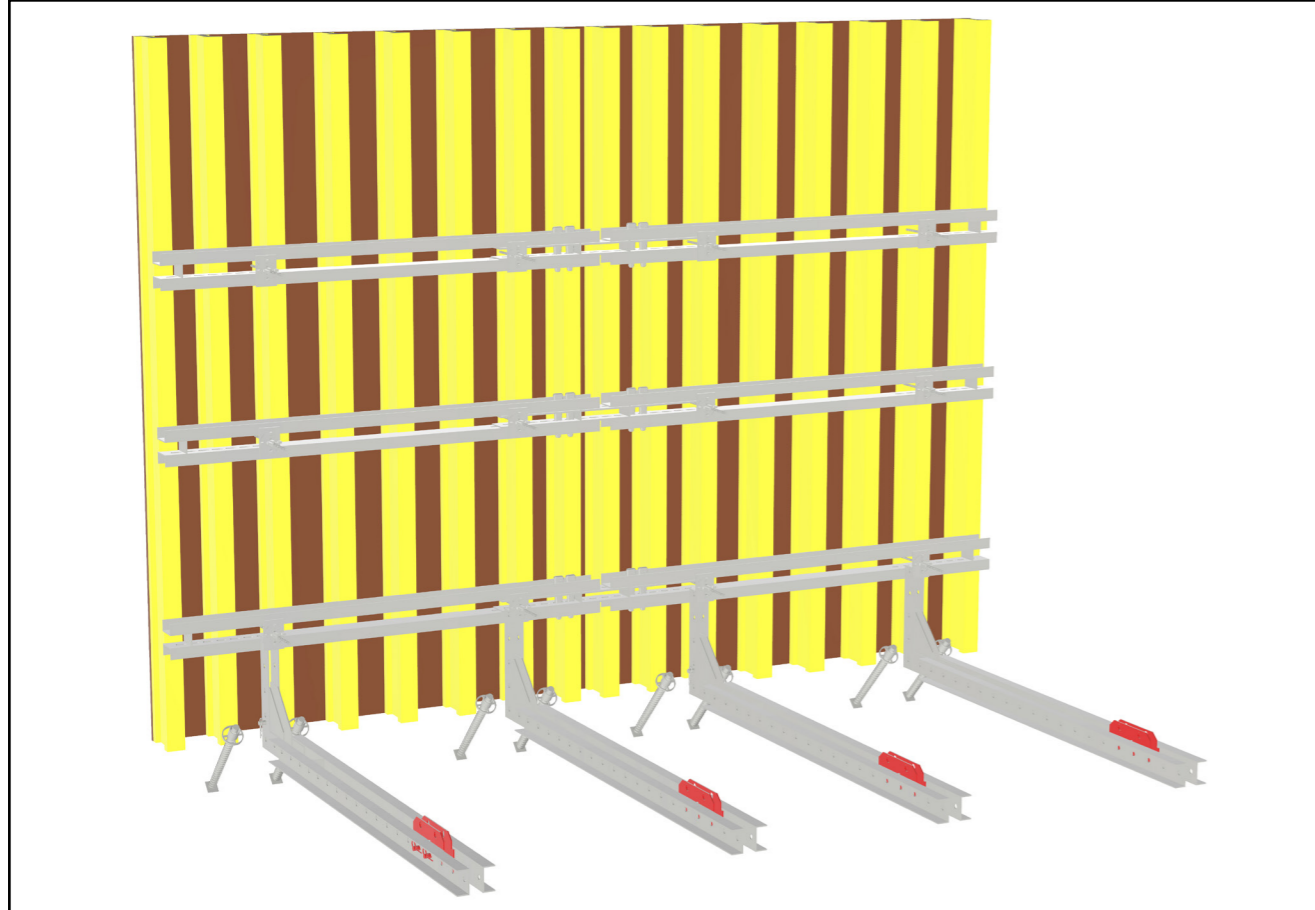
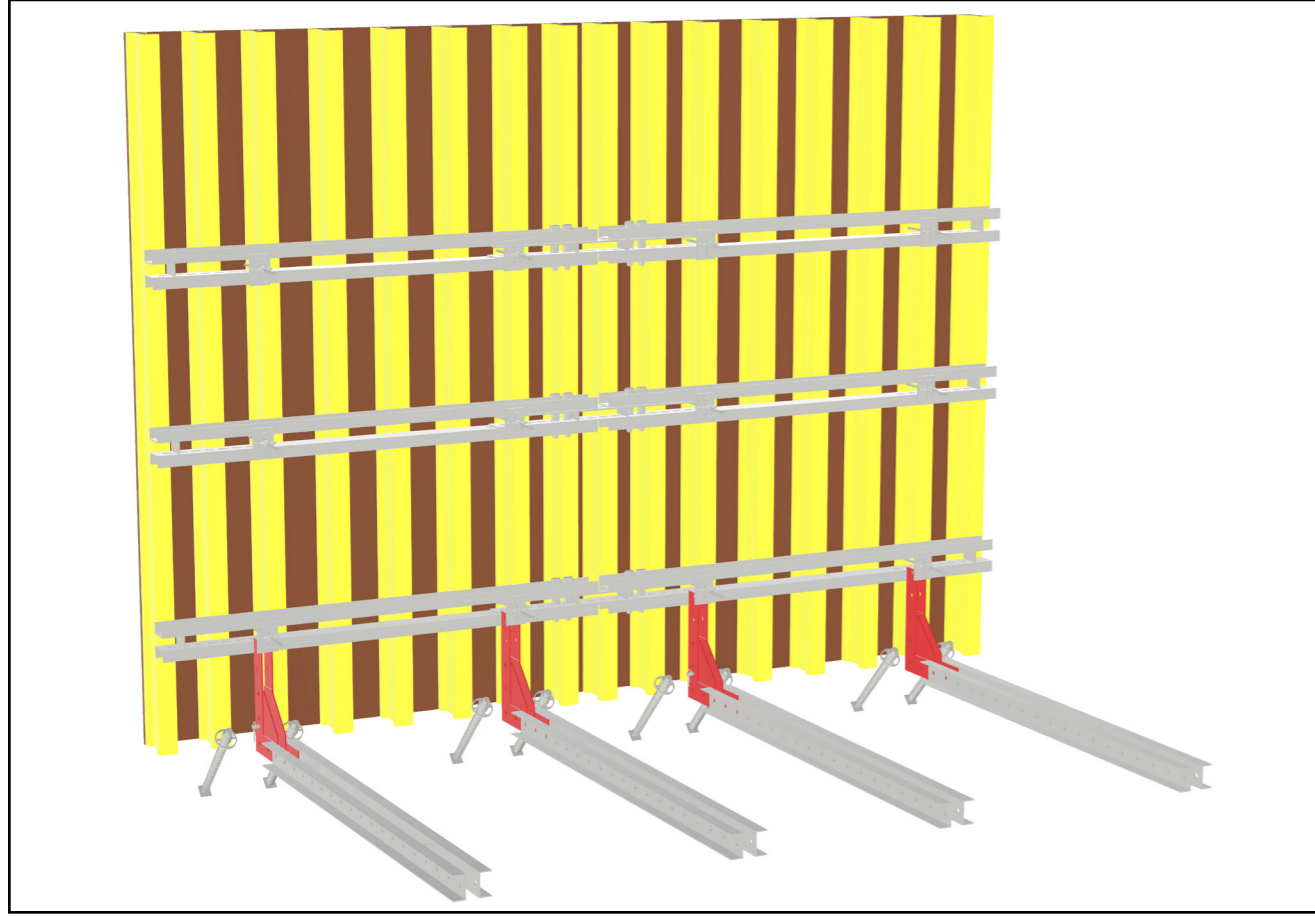
Line number 1 is the situation where the entire concrete height is the hydrostatic pressure height.

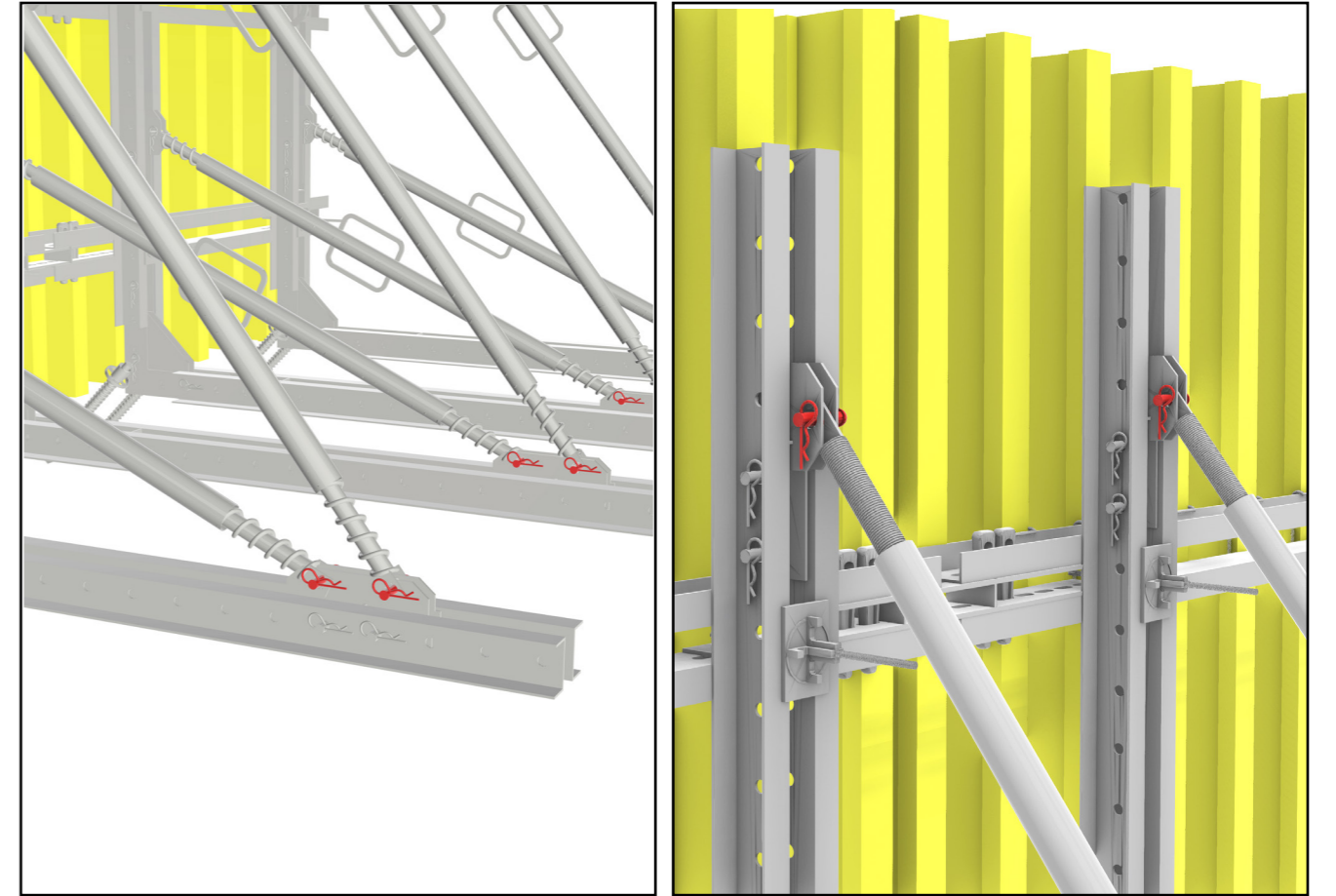
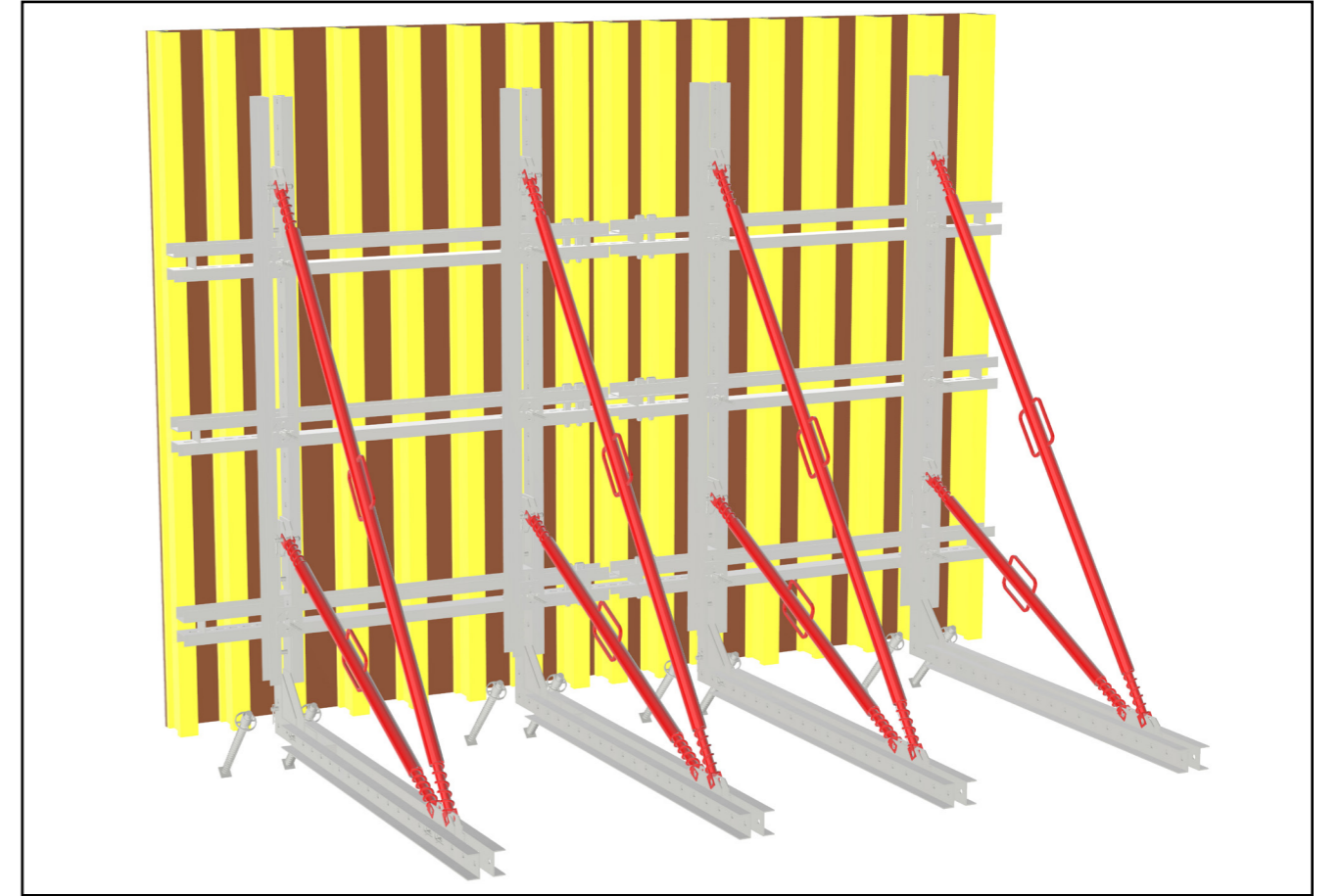
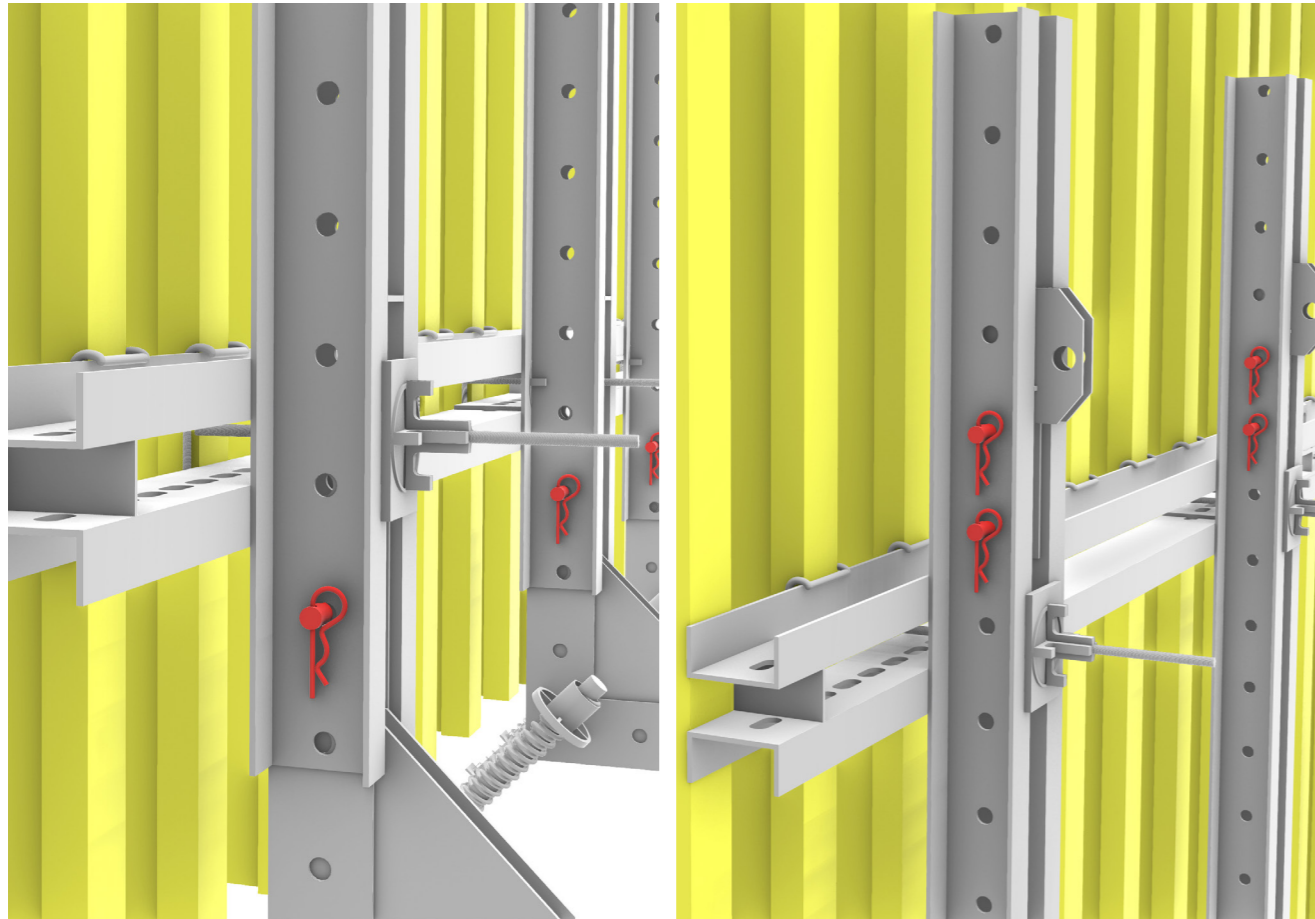
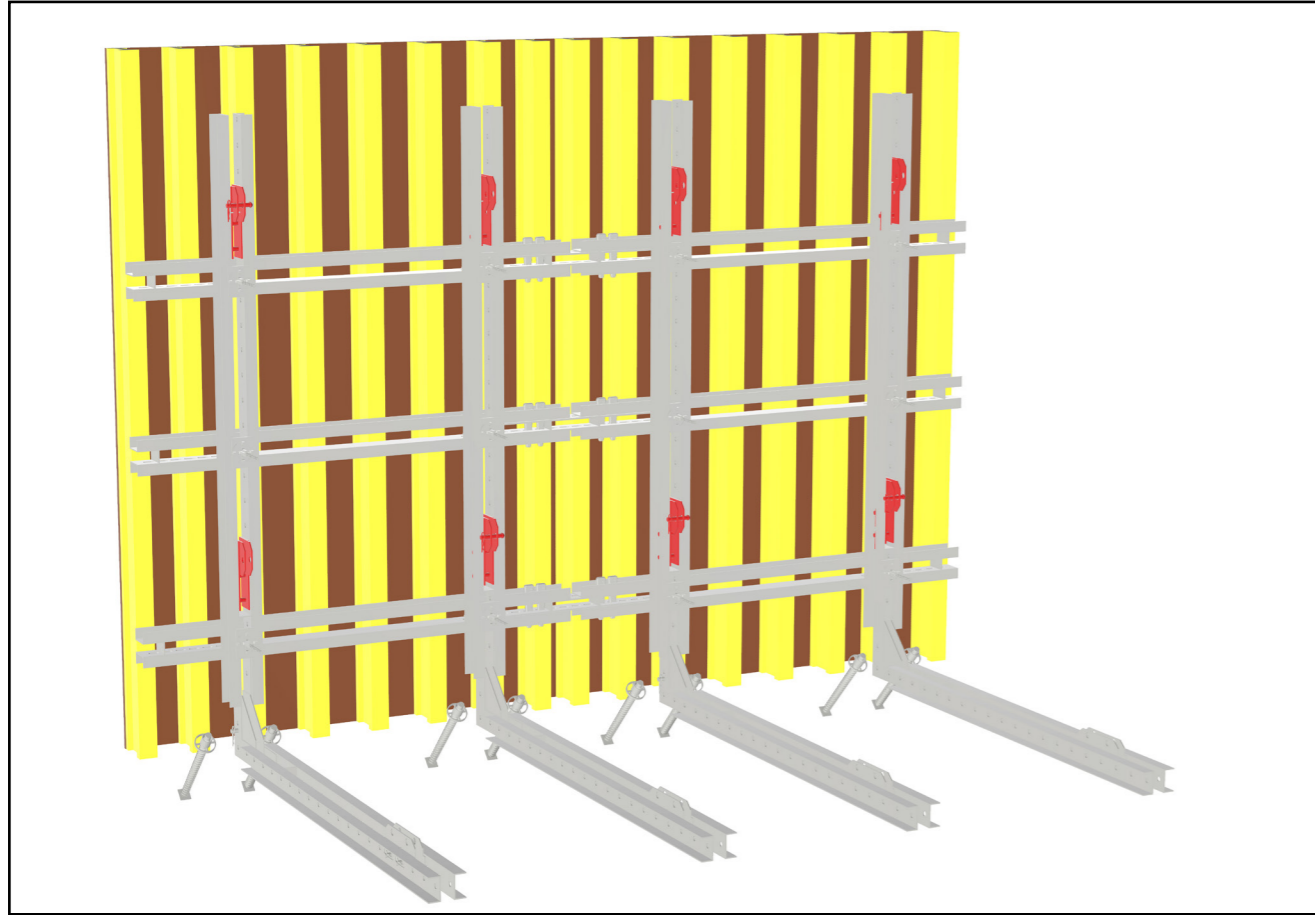
Concrete setting time 5 hours

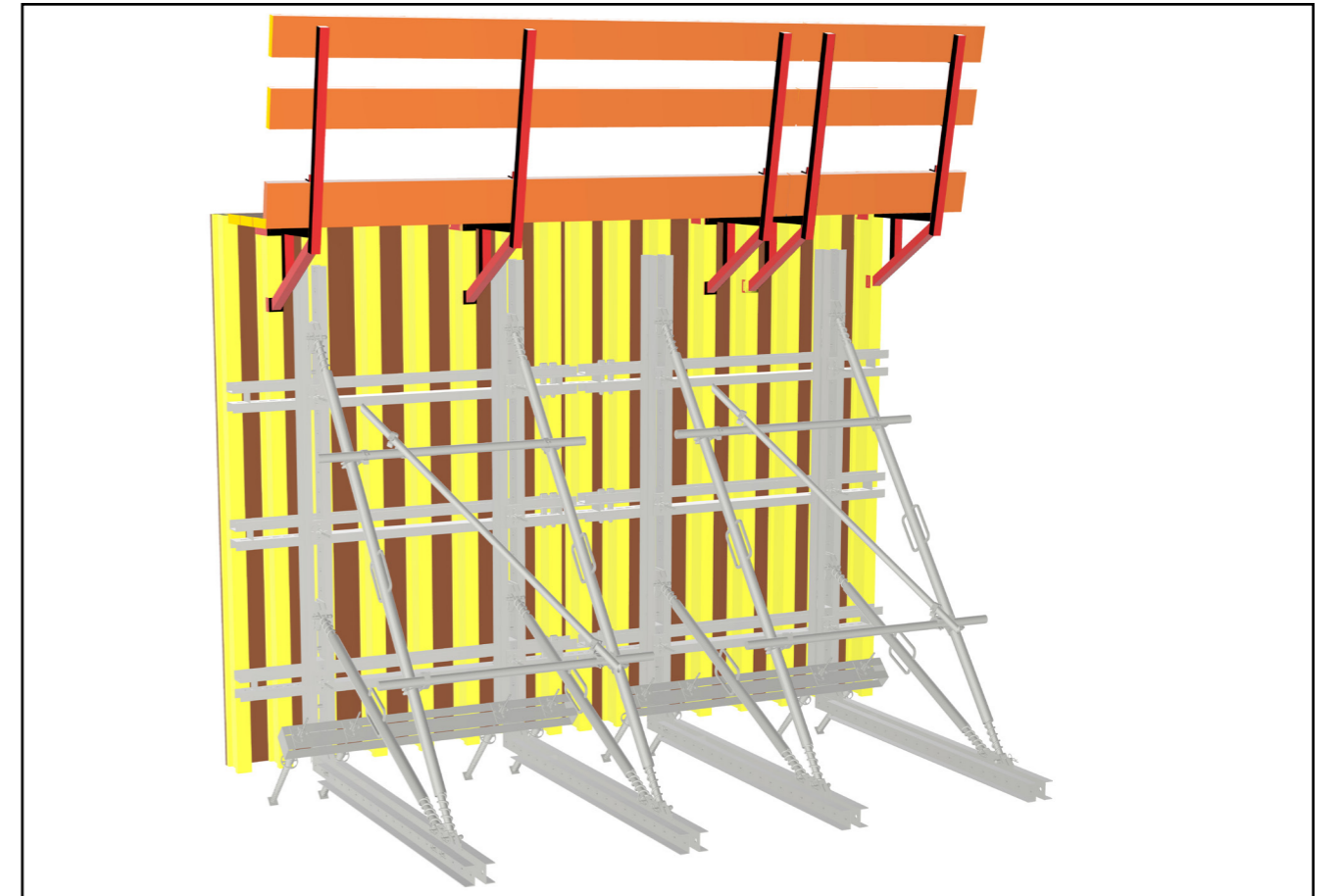
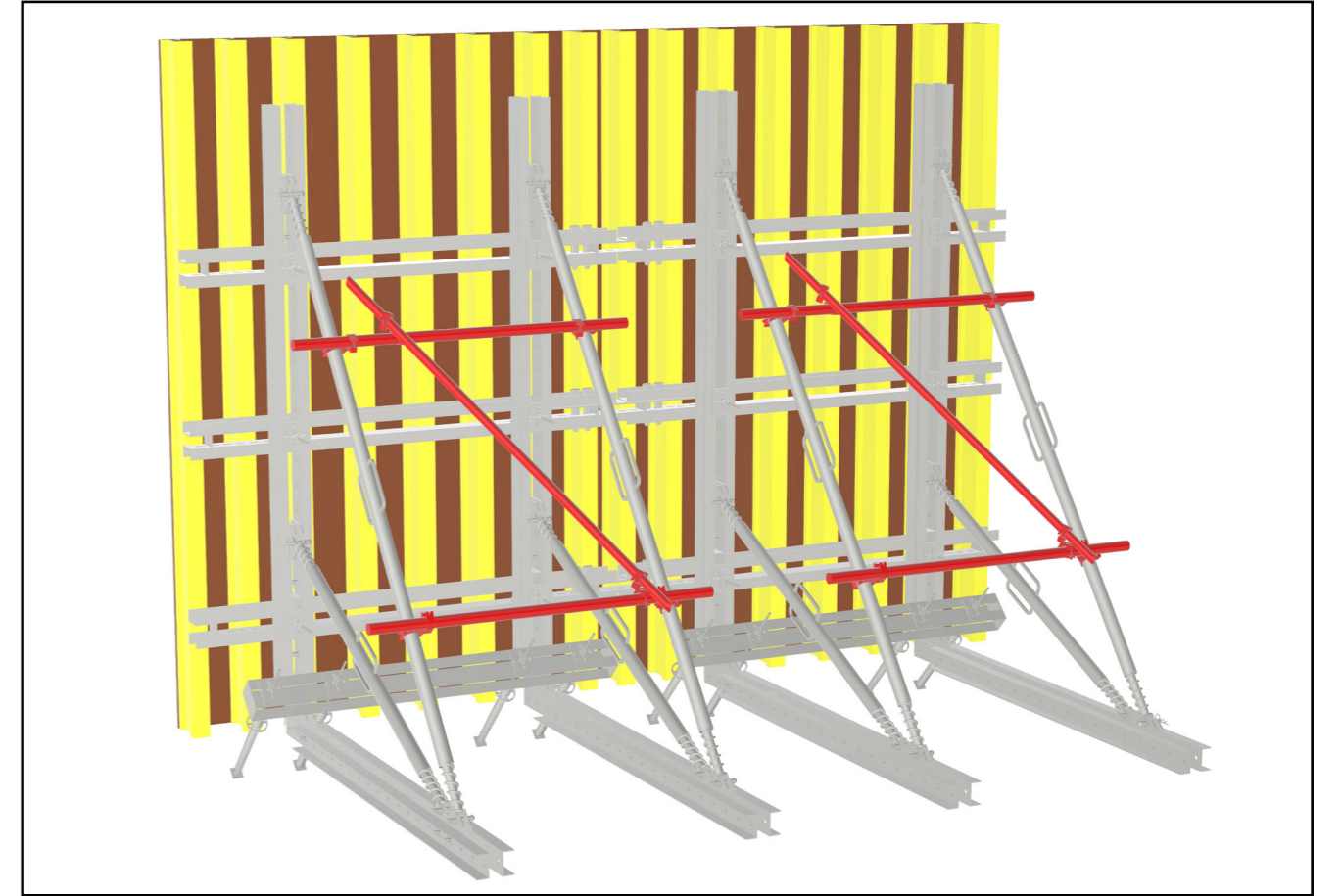
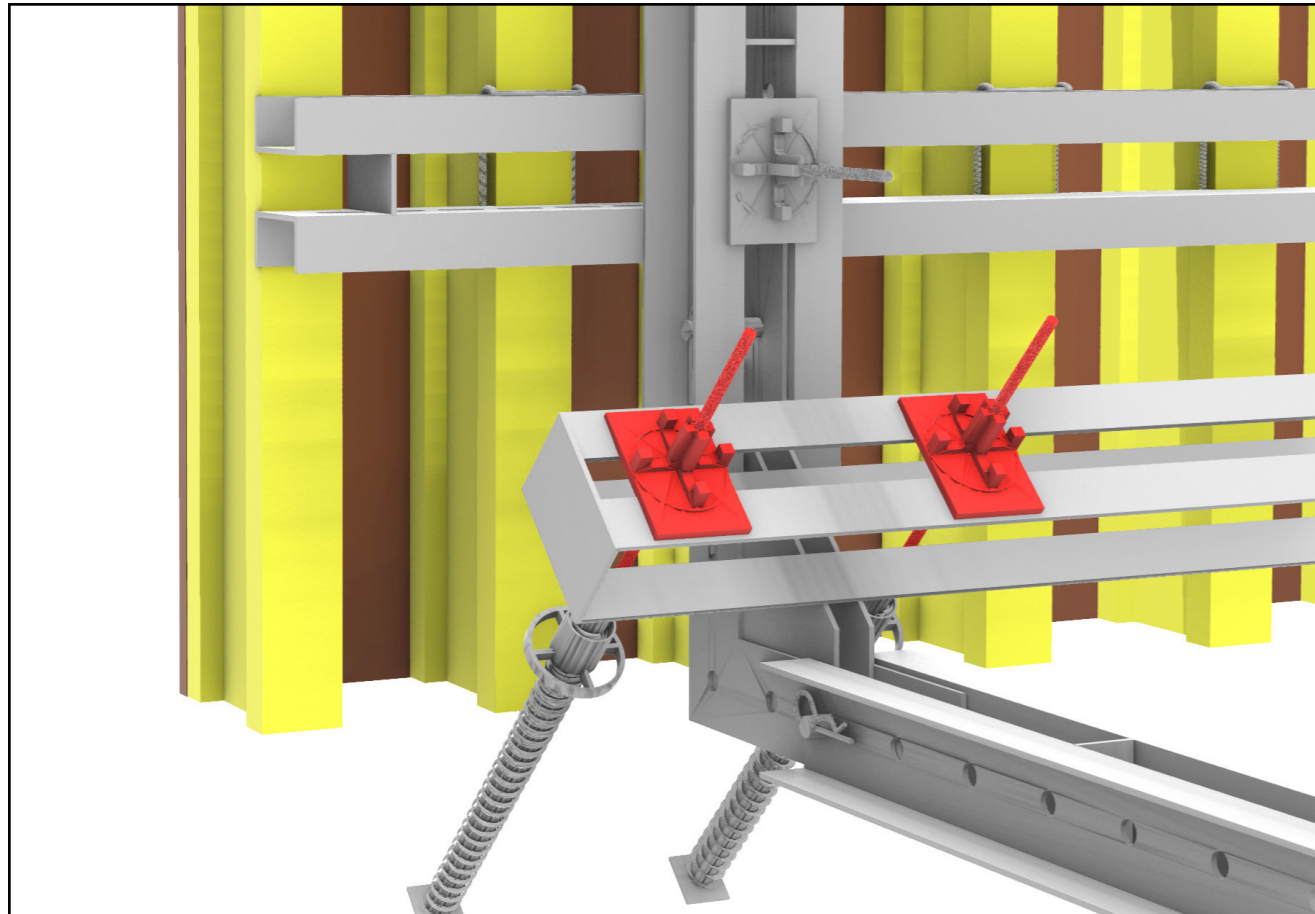
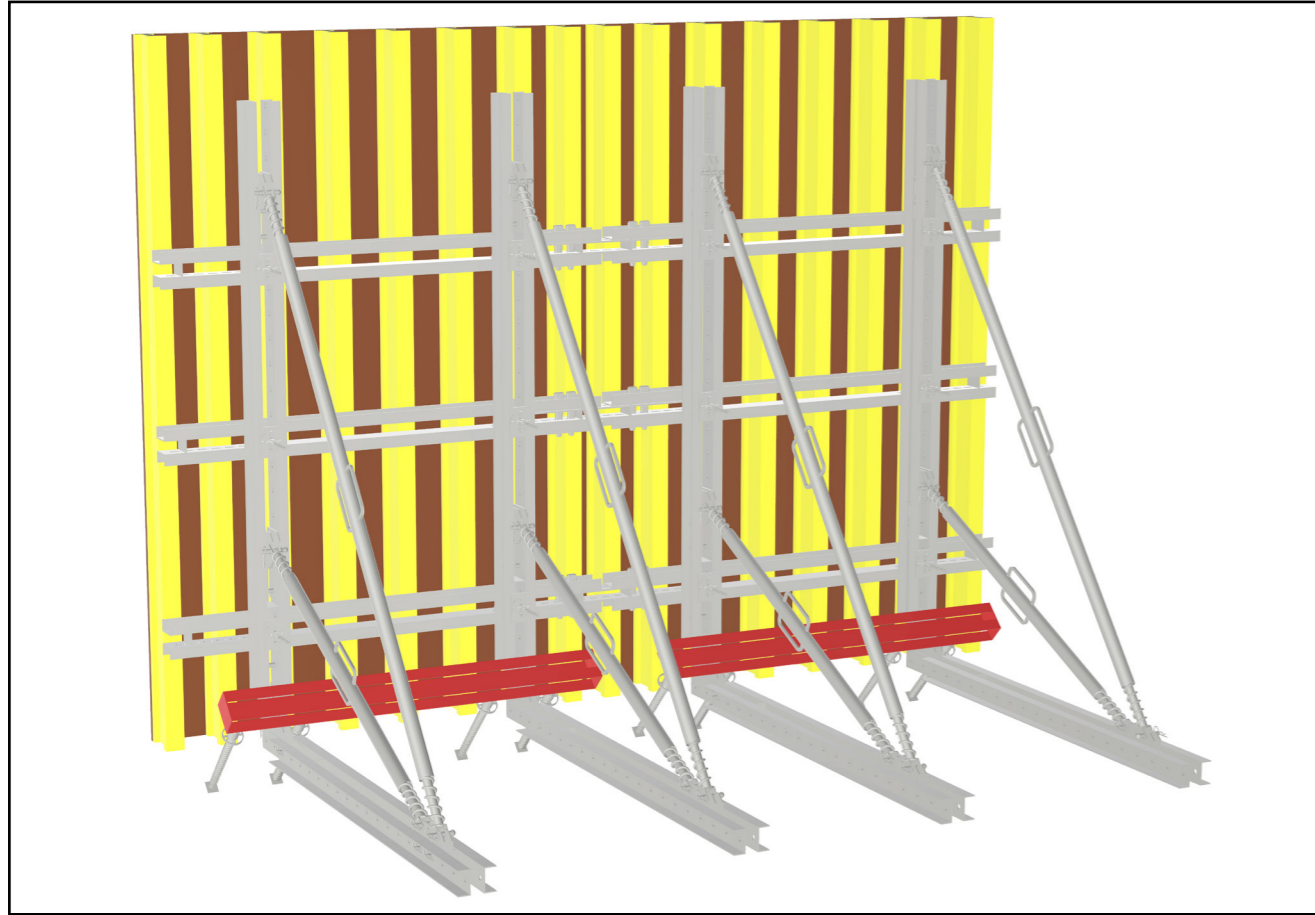
Concrete specific gravity 25 kN/m³





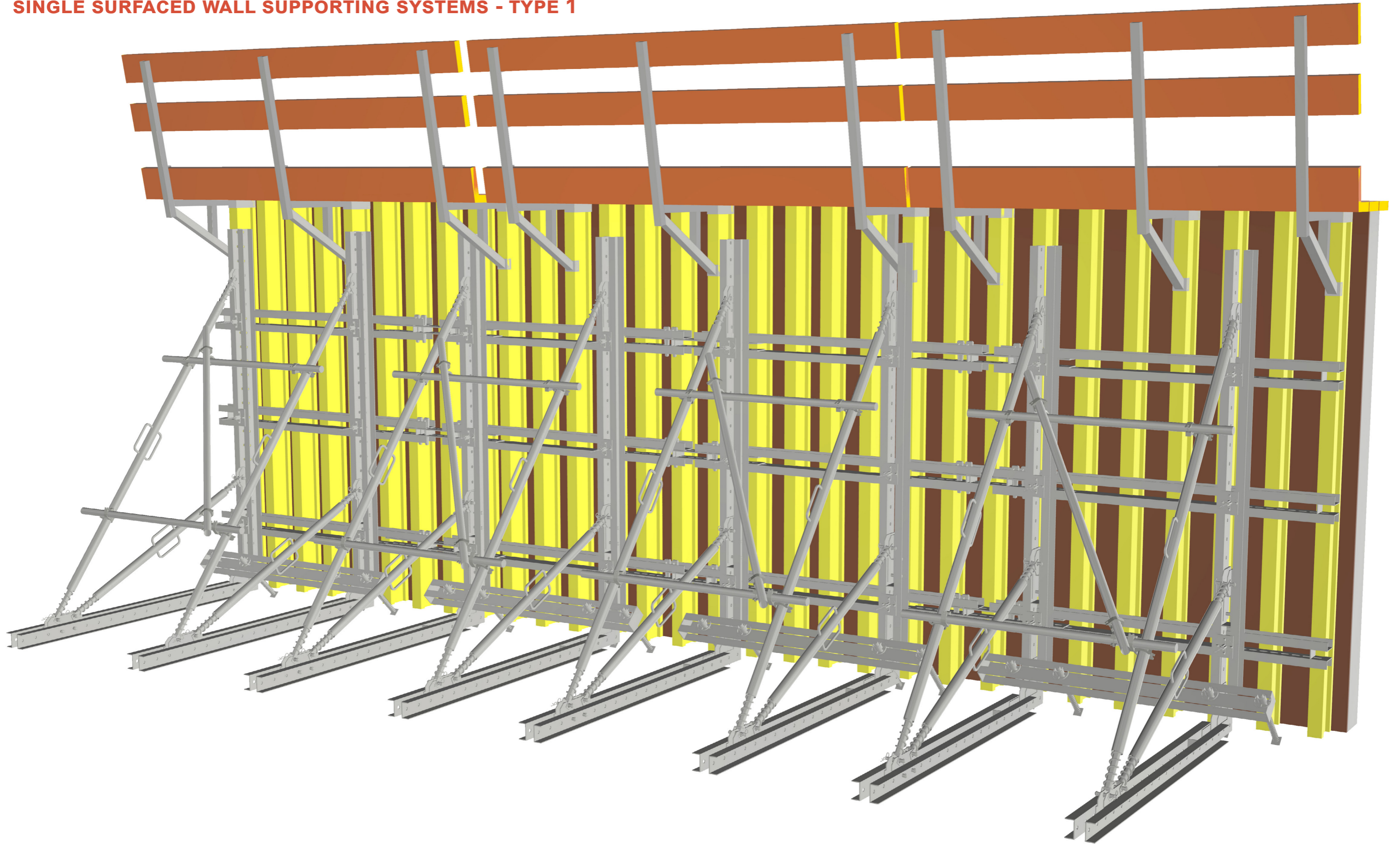


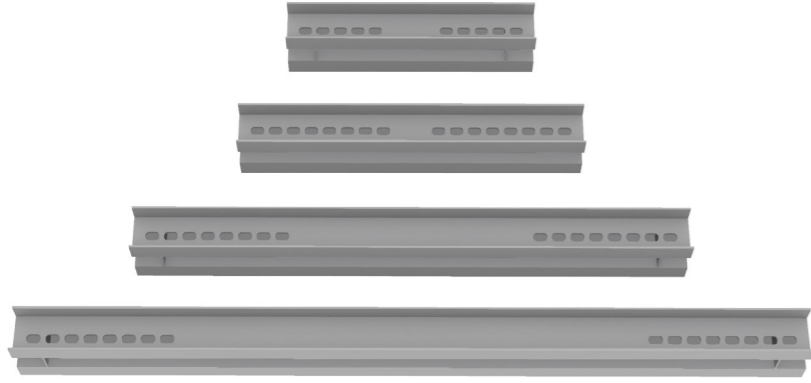




TEK YÜZEYLİ PERDE DESTEK SİSTEMLERİ - TİP 1

SINGLE SURFACED WALL SUPPORTING SYSTEMS - TYPE 1





Çelik Perde Kuşağı NPU100 Steel Waler

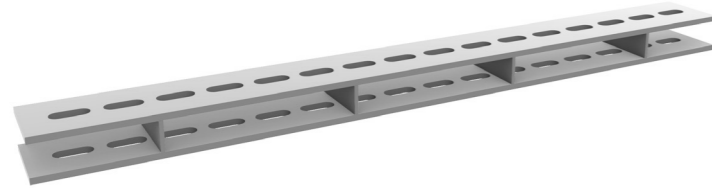
KOD CODE	BOYUT cm SIZE cm	AĞIRLIK kg WEIGHT kg
RCA075	75	15,33
RCA100	100	20,80
RCA120	120	25,00
RCA135	135	28,15
RCA145	145	30,25
RCA150	150	31,05
RCA170	170	35,50
RCA200	200	41,40
RCA220	220	45,90
RCA250	250	51,75
RCA300	300	63,14
RCA350	350	73,74
RCA375	375	79,04
RCA400	400	84,34
RCA450	450	95,00
RCA500	500	105,55

Ankraj Kuşağı Anchoring Waler



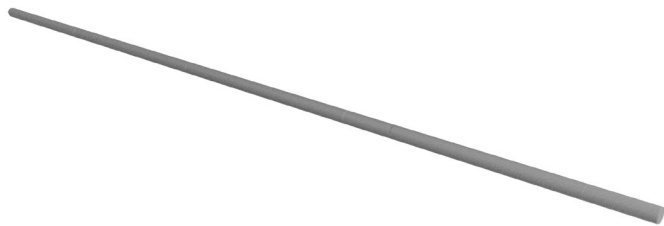
KOD CODE	BOYUT cm SIZE cm	AĞIRLIK kg WEIGHT kg
RCA100	100	20,80
RCA120	120	25,00
RCA135	135	28,15
RCA145	145	30,25
RCA150	150	31,05
RCA170	170	35,50
RCA200	200	41,40
RCA220	220	45,90
RCA250	250	51,75

Kuşak Birleştirme Waler Coupler



KOD CODE	BOYUT cm SIZE cm	AĞIRLIK kg WEIGHT kg
RGD007	100	9,10
RGD008	120	11,00
RGD010	150	13,65

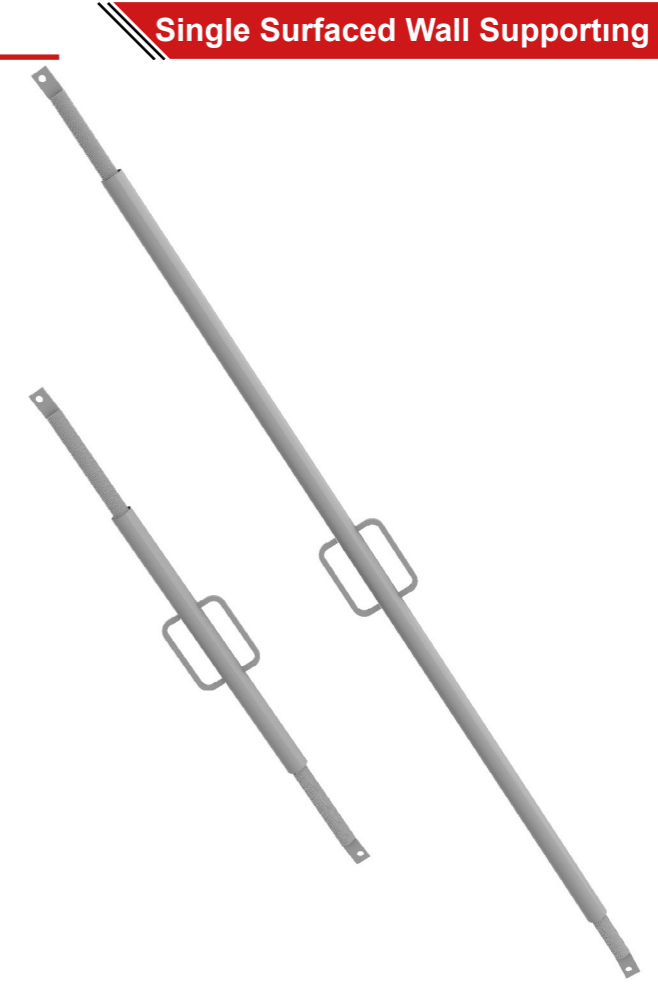
Tie Rod Tie Rod



KOD CODE	BOYUT cm SIZE cm	AĞIRLIK kg WEIGHT kg
RSA080	80	1,20
RSA100	100	1,50
RSA120	120	1,80
RSA150	150	2,25

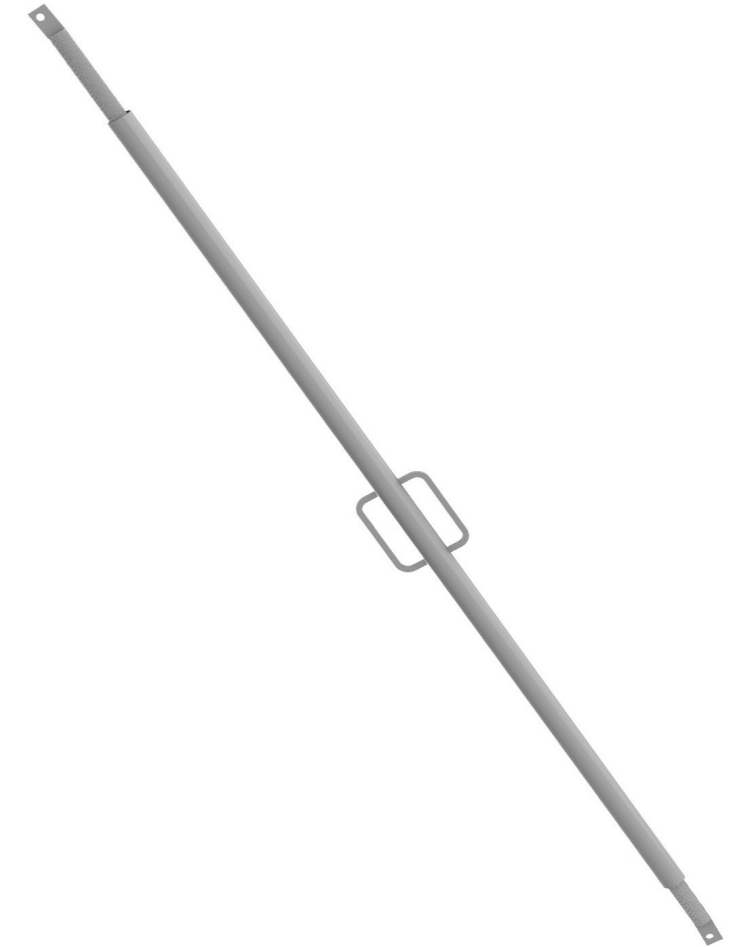
Payanda Ø60 Push Pull Prop Ø60

KOD CODE	BOYUT cm SIZE cm	AĞIRLIK kg WEIGHT kg
REB140	140	12,00
REB150	150	12,90
REB200	200	14,70
REB250	250	17,35
REB275	275	18,25
REB350	350	23,60
REB450	450	25,90
REB550	550	29,50



Payanda Ø70 Push Pull Prop Ø70

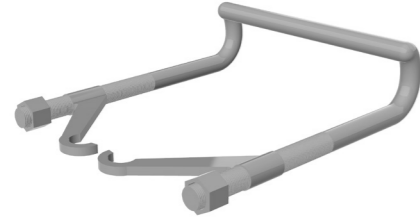
KOD CODE	BOYUT cm SIZE cm	AĞIRLIK kg WEIGHT kg
REA550	550	44,00
REA650	650	48,70





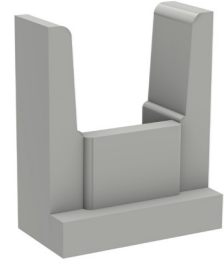
Çalıřma Konsolu H20
Bracket H20

KOD CODE	BOYUT cm SIZE cm	AĞIRLIK kg WEIGHT kg
RGD023	-	10,00



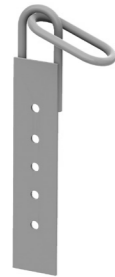
H20 Bağlama Parçası
Waler Connection Hook

KOD CODE	BOYUT cm SIZE cm	AĞIRLIK kg WEIGHT kg
RGD012	-	1,80



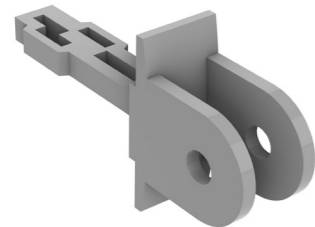
H20 Sıkıřtırma Parçası
Waler Clips

KOD CODE	BOYUT cm SIZE cm	AĞIRLIK kg WEIGHT kg
RGD012	-	1,80



Vinç Kulbu
Crane Splice

KOD CODE	BOYUT cm SIZE cm	AĞIRLIK kg WEIGHT kg
RGD002	-	7,20

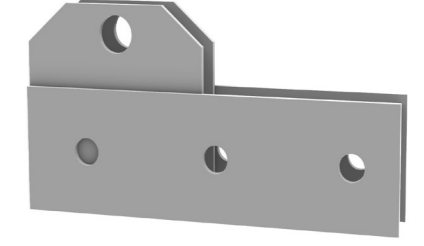


Payanda Kafası
Push Pull Prop Head

KOD CODE	BOYUT cm SIZE cm	AĞIRLIK kg WEIGHT kg
RGD014	-	2,25

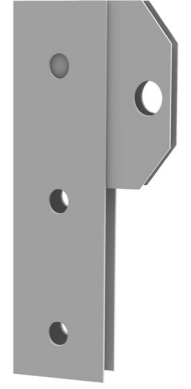
Taban Bağlantı Parçası
Base Connection

KOD CODE	BOYUT cm SIZE cm	AĞIRLIK kg WEIGHT kg
RGD046	-	7,50



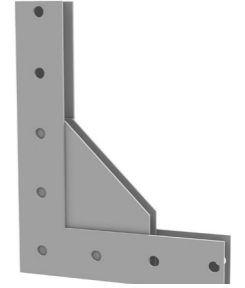
Kafa Bağlantı Parçası
Head Connection

KOD CODE	BOYUT cm SIZE cm	AĞIRLIK kg WEIGHT kg
RGD047	-	8,50



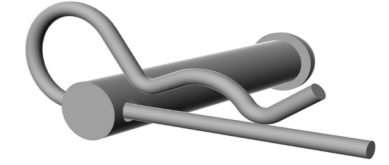
Köşe Bağlantı Parçası
Corner Connection

KOD CODE	BOYUT cm SIZE cm	AĞIRLIK kg WEIGHT kg
RGD049	-	14,00



Pim Kopilya
Pin and Split Pin

KOD CODE	BOYUT cm SIZE cm	AĞIRLIK kg WEIGHT kg
RGD020	-	0,03
RGD017	-	0,11



Kuşak Kaması
Waler Wedge

KOD CODE	BOYUT cm SIZE cm	AĞIRLIK kg WEIGHT kg
RGD011	-	0,77



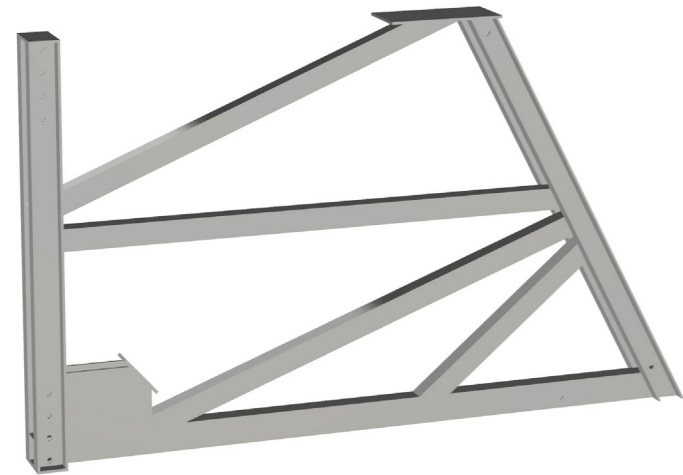
TEK YÜZEYLİ PERDE DESTEK SİSTEMLERİ - TİP 2

SINGLE SURFACED WALL SUPPORTING SYSTEMS - TYPE 2



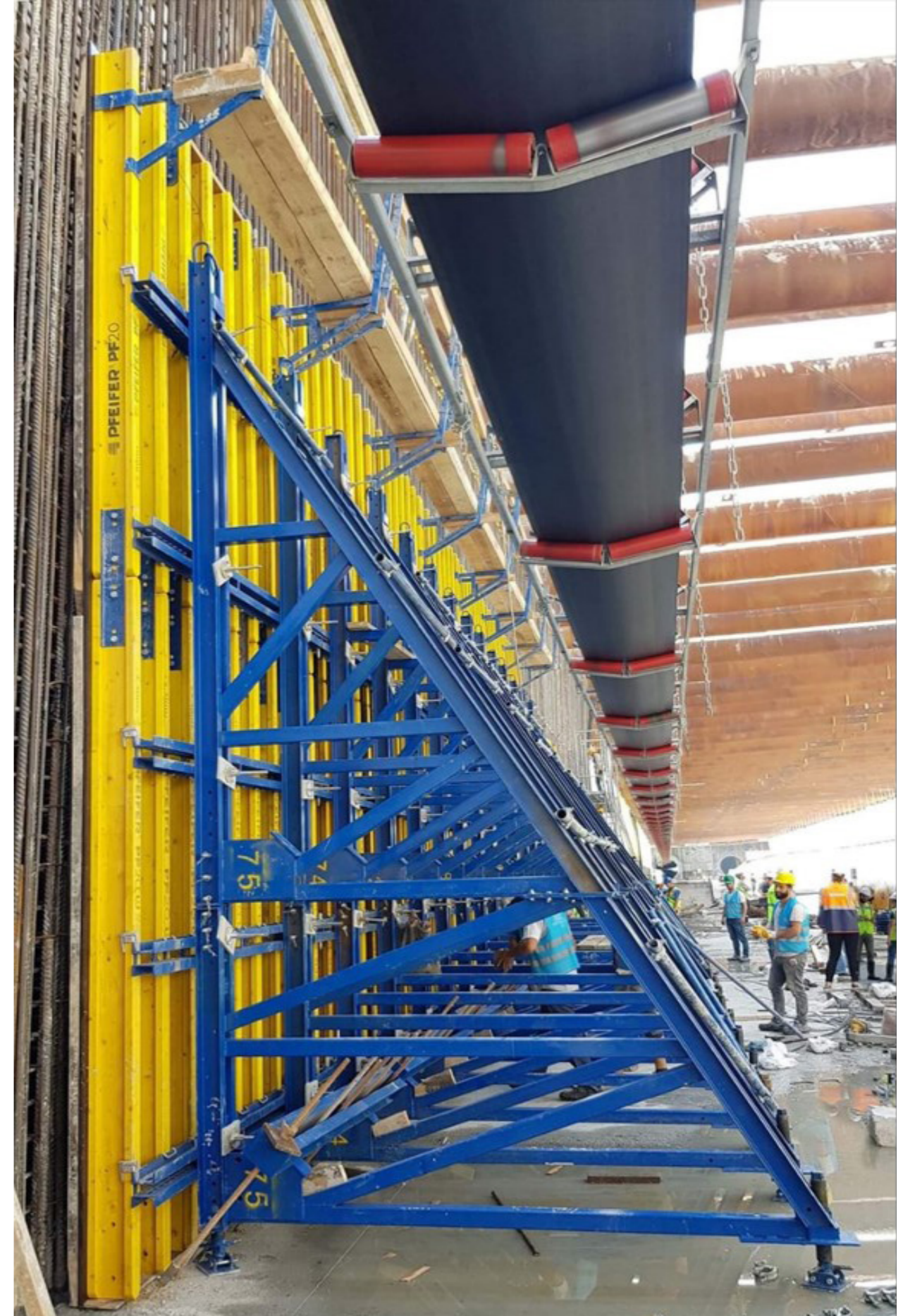
Asker Payanda
Soldier Prop

KOD CODE	BOYUT cm SIZE cm	AĞIRLIK kg WEIGHT kg
RAB300	300	63,00
RAB350	350	70,00
RAB400	400	75,00
RAB450	450	80,00
RAB500	500	85,00
RAB550	550	90,00
RAB600	600	95,00



Asker Payanda Uzatma Parçası
Soldier Prop Extension Component

KOD CODE	BOYUT cm SIZE cm	AĞIRLIK kg WEIGHT kg
RAB001	-	240,0



TIRMANMA SİSTEMLERİ UYGULAMALARI

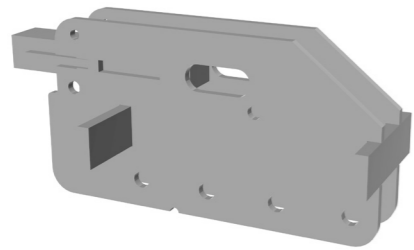
CLIMBING SYSTEMS APPLICATIONS



Tirmanma Konsolu
Climbing Bracket

KOD CODE	BOYUT cm SIZE cm	AĞIRLIK kg WEIGHT kg
RGD027	-	90,00

Tirmanma Ayar Başlığı
Climbing Adjusting Head



KOD CODE	BOYUT cm SIZE cm	AĞIRLIK kg WEIGHT kg
RGD028	-	20,00

